

Atlas Copco



Atlas Copco mobile air compressor

Providing sustainable
solutions for a variety of difficult applications

Pressure range: 7-10.3bar

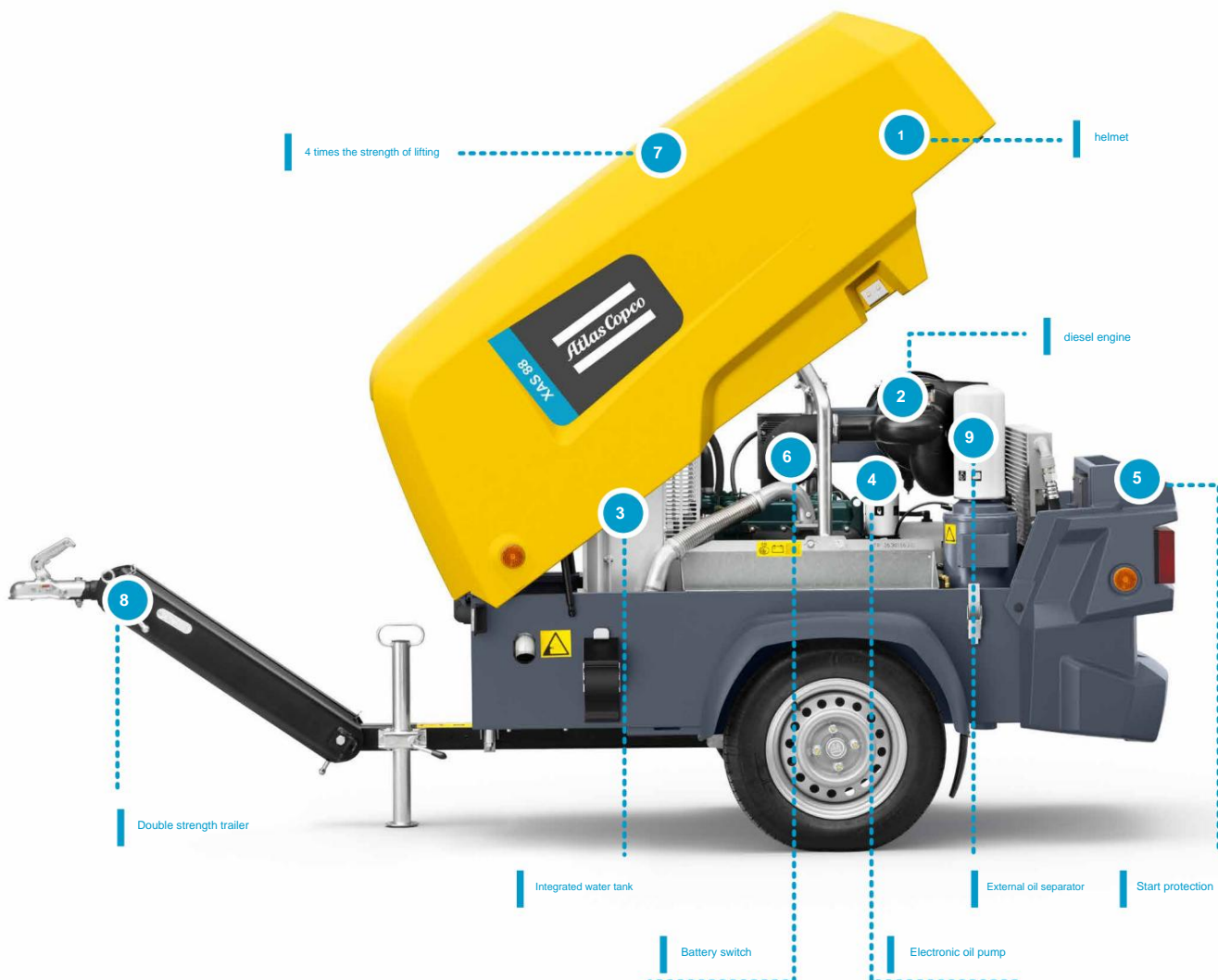
Gas volume range: 3.5-5.3m³/min

A challenge to performance, a breakthrough in industry standards



The 8 series air compressor is a new product developed by Atlas Copco after more than ten years of dedicated research. This series of air compressors can produce up to 5.3m³ /min of air.

The 8 series air compressor adopts a brand-new design with a more compact structure and a 15% reduction in volume. It is equipped with Atlas Copco's new generation air compressor head, which reduces the oil consumption of the air compressor by 12%. The oil filter is external, so that the maintenance time does not exceed 1 hour. The maintenance cycle of the machine is extended to once every 2 years, reducing the maintenance frequency and maintenance costs. The safety helmet design is not only beautiful in appearance and won the European Red Dot Design Award, but also has both sturdiness and durability, which can increase the residual value of second-hand machines by 10%. All of this together increases customers' return on assets by 10% and comprehensively improves customers' sustainable productivity.



Atlas Copco

One machine provides both electricity and air power



8 Series Mobile Air Compressor

Integrated Generator

When you need to power a power light, power tools, small electric equipment... For all power needs up to 400V, there is no need to prepare a generator separately. The diesel-driven 8 series air compressor can be equipped with an integrated generator. The integrated power source protected by a safety helmet can provide up to 5.3m³/min air power and 400V electricity.

Generator selection



230/400V generator

- All models come with three sockets:
1 x 400V 16A, 2 x 230V 16A
- 9 kVA circuit breaker: 4P13A

2000 Hour

Engine belt maintenance intervals

↔

No additional grounding required as standard for IT relays

⏏

Full oil

Can run for one working day

⌚

+3 pneumatic tools
+2 electric tools

🚚

When not using electricity, the energy-saving system automatically reduces engine speed to reduce fuel consumption

GAS ⚡



Technical Parameters

performance		CHATS 68KD	XAS 78KD	XAS 88KD	XAS 98KD	XAS 98KDG
Working pressure	bar	10.3	7.0	7.0	7.0	7.0
Exhaust	m3 /min	3.5	4.5	5.0	5.3	5.3
volume		1	1	1	1	1
Compression level Air	L	9	9	9	9	9
compressor	inch	3"G3/4	3"G3/4	3"G3/4	3"G3/4	3"G3/4
oil volume Exhaust	L	60	60	60	60	60
valve Diesel tank volume Sound power level	dB(A)	101	101	101	101	101
(Lw @2000/14/EC) Emission standard		GIV				

dynamo						
Generator power	kVA	N/A	N/A	N/A	N/A	9
Generator output voltage	In	N/A	N/A	N/A	N/A	400

engine						
Brand		Kubota	Kubota	Kubota	Kubota	Kubota
Model		V 1505 T	V 1505 T	V 1505 T	V 1505 T	V 1505 T
Number of		4	4	4	4	4
cylinders Rated	kW	33	33	33	33	33
power Full load	rpm	3,000	3,000	3,000	3,000	3,000
speed Unload	rpm	1,850	1,850	1,850	1,850	1,850
speed Oil	L	5.5	5.5	5.5	5.5	5.5
volume Cooling system volume	L	7.5	7.5	7.5	7.5	7.5

Dimensions						
Box size (length * width * height)	mm	1940*1200*1240				
Box weight	kg	<750	<750	<750	<785	<850
Trailer size (length * width * height)	mm	2960*1350*1420				
Trailer weight	kg	<750	<750	<750	<785	<850

The photographs and illustrations contained in this literature may depict products that include optional and/or additional parts that are not included in the standard product version. Therefore, unless specifically purchased, such optional/additional parts are not included in the product purchased by the customer. We reserve the right to change the specifications and design of the products described in this literature without prior notice. Not all products are available in all markets.

XAS 88



Optional

- Skid-type chassis
- aftercooler
- cold start package
- Multiple oil filters,
- safety filter
- elements, spark arrestors

1 set of
new screw
elements

Legendary hood
development experience

11 years

HardHat®

Compressor oil
maintenance once

2 years

12%
improvement
in fuel efficiency

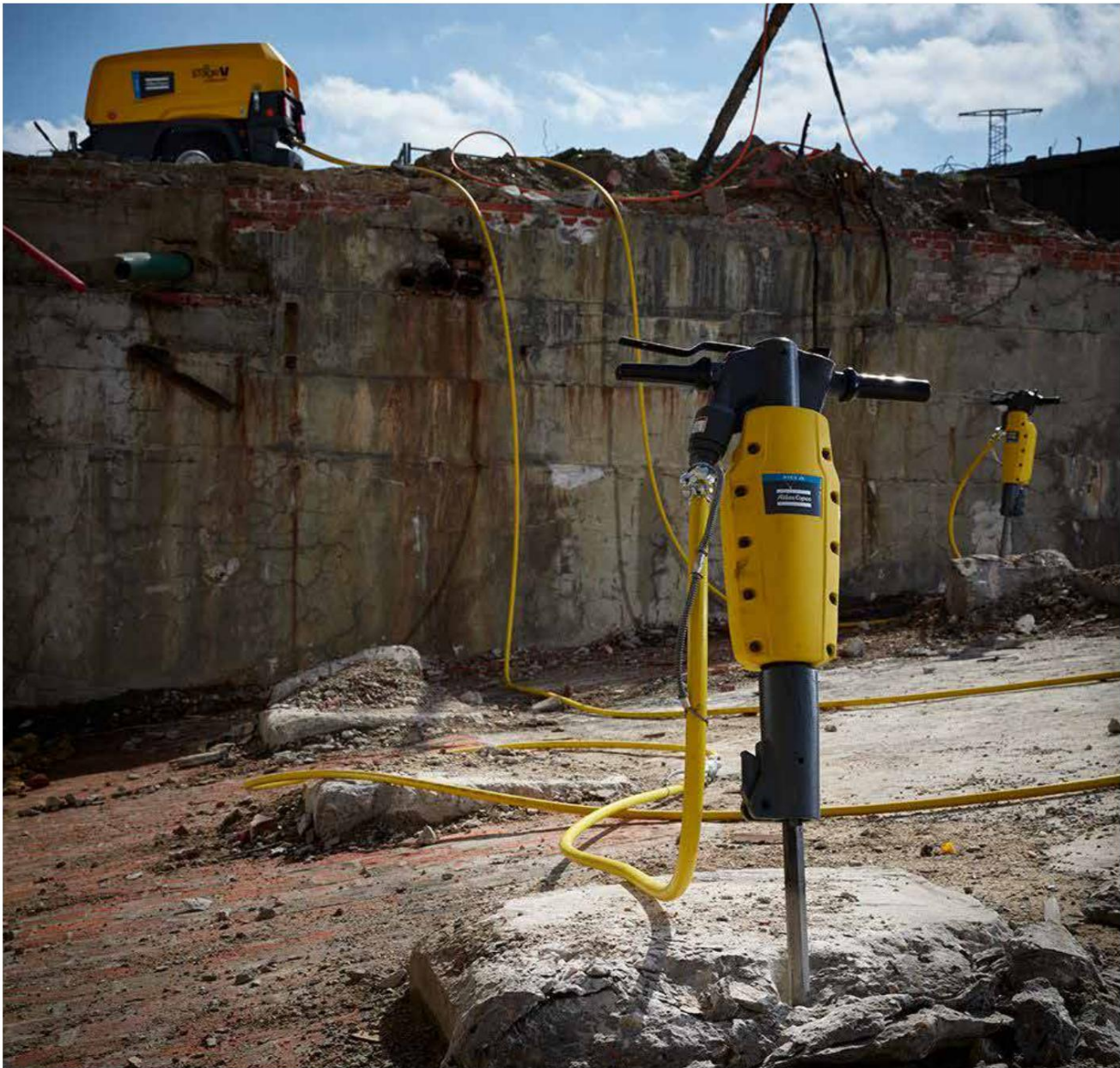
15%
smaller

Lighter than
similar models

150KG

Maintenance
time less
than 60 minute

Complete solutions to meet various application conditions



■ 8 series air compressor can drive 3 pneumatic tools at the same time



tear down



broken



Dust Removal



Trimming

Mobile Power Solutions Portfolio

Air Compressor

Ready-to-use flow

- rate: 3.5-5.3 m³/min
- Exhaust pressure: 7-10.3 bar



Multifunctional

- Flow rate: 12.0-25.8 m³/min
- Exhaust pressure: 5-22 bar



Productivity Partner

- Flow rate: 26.0-45.3 m³/min
- Exhaust pressure: 15-35 bar



Both diesel and electric options are available.

Generator Set

Portable

- current: 1.6-13.9 kVA



Main

- current: 9-1250* kVA



Spare type

- Current: 10-3400 kVA



* Available in a variety of configurations to meet power generation needs for any size application.

Drain pump

Electric submersible pump

- Flow rate: 13.5-972m³ /h



Centrifugal

- pump flow rate: 150-1400m³ /h



Small portable pump

- Flow rate: 12-150m³ /h



Both diesel and electric options are available.

Lighting

LED lighting



Metal halide lighting



Non-powered LED lighting



Atlas Copco (Shanghai) Trading Co., Ltd.

12th Floor, Building 36, No. 1888, Xinqiniao Road, Shanghai

Tel: 021-6108 2388

National customer hotline 400 633 9778

Website: www.atlascopco.com.cn

Scan the QR code to follow our official WeChat account

Atlas Copco

Power Technology Department Official WeChat

